



ಬೆಂಗಳೂರು ಮೆಟ್ರೋ ರೈಲ್ ನಿಗಮ ನಿಯಮಿತ

(ಸಹಭಾಗಿತ್ವದ - ಕರ್ನಾಟಕ ಸರ್ಕಾರ ಹಾಗೂ ಕೇಂದ್ರ ಸರ್ಕಾರ ಉದ್ಯಮ)
ನೋಂದಾಯಿತ ಕಛೇರಿ : ಬಿ.ಎಂ.ಟಿ.ಸಿ. ಕಾಂಪ್ಲೆಕ್ಸ್, 3ನೇ ಮಹಡಿ, ಕೆಂಗಲ್ ಹನುಮಂತಯ್ಯ ರಸ್ತೆ, ಶಾಂತಿನಗರ
ಬೆಂಗಳೂರು - 560 027, ಭಾರತ

Bangalore Metro Rail Corporation Ltd.

(A Joint Venture of Government of Karnataka & Government of India)

Regd. Office : B.M.T.C. Complex, 3rd Floor, K.H. Road, Shanthinagar,
Bangalore - 560 027. INDIA

BMRCL/Dy.CE/R1A/Ph2/Trees/2021/4527

Date: 20.01.2021

To,

Deputy Conservator of Forest (Tree Officer)

Bangalore Urban Division,

Aranya Bhavan Annex, 18th Cross.

Maaleshwaram, Bengaluru - 560003

Project:- Construction of elevated structures (viaduct & stations) of length 8.039Km (Approx.) from Baiyappanahalli station (excl.) to Visvesvaraya Industrial Area Station (incl.) (Chainage 18603.879m to 26643.032m) including Road Widening & allied works and 6 Numbers of Elevated Metro stations viz., Jyothipuram, K.R. Puram, Mahadevapura, Garudacharpalya, Doddanakundi Industrial Area, Visvesvaraya Industrial Area in the Extension of East side of E-W Corridor of Bangalore Metro Rail Project, Phase-2

Subject: Removal of trees near Vijnapura Survey No. 79 & Benniganahalli Village Survey No.80 & 83 and Jyothipura Metro station Entry Exit Structure Reach 1A, Bangalore Metro Rail Project Phase 2 - reg

Ref 1) Karnataka Preservation of trees rules, 1977/ Form I Dated; 20.01.2021

Bangalore Metro Rail Corporation is carrying out elevated construction works from Baiyapanahalli Metro Station to White Field Metro Station of 15.23 Kms. The Metro Construction activities are in full swing in this reach.

BMRCL is proposed to take up road widening works and Bus Hub near Vijnapura Survey No. 79 and Benniganahalli Village Survey No. 80&83 and Station Entry/Exit structures for Jyothipura Metro Station. A total number of 47 trees are standing in the project area of which 42 numbers are infringing the construction work, which are essential to be removed.

These trees could not be included in the earlier application number BMRCL/Dy.CE/R1A/Ph2/Trees/2020/4320 Date; 20/11/2020 due to non-acquisition of this land and pending finalisation of detailed plan of this area.

It is requested to grant permission to remove the trees as the works of the Metro Rail Project in this reach is affected.

Thanking you

**Deputy Chief Engineer
Engineer/R1A/BMRCL**

THE KARNATAKA PRESERVATION OF TREES RULES, 1977

FORM NO.I

Form of Application

Date: 20.01.2021

From,

**Engineer (Reach R1A)
BMRCL Project Office
Krishnan Palya Road
Near ESI Local Office
Baiyapanahalli, Bengaluru – 560038**

To,

**The Deputy Conservator of Forests (The Tree Officer),
Annex Building, BBMP Office
Hudson Circle,
Bengaluru – 560002**

Sir,

BMRCL intend to clear the trees infringing the Metro construction works and bus bay construction works. The details of the infringing trees are enclosed for further necessary action.

01	Sy.No. and extent of the land from which the trees are to be felled.	Vijinapura Survey No.79 and Benniganahalli Village Survey No. 80 & 83
02	Location of the Sy.No. with Sy.sketch	Vijinapura Survey No.79 and Benniganahalli Village Survey No. 80 & 83 and Jyothipuram Metro Station
03	Whether the boundary of Sy.No. is clear and demarcated properly on the ground.	YES
04	The number and kind of trees intended to be felled with girth of each tree (detailed list to be attached). a. Number of Trees Standing in the Project Area b. Number of Trees proposed to be removed	47 (Annexure I) 42 (Annexure II)
05	The purpose for which the trees are to be felled (specific mention to be made about the purpose)	Infringing the Metro construction works and bus bay construction works from Baiyapanahalli to Whitefield

06	Khata extract and Certificate from the Tahasildar regarding the tenure of the Land (Hiduvalli, Darkhast, Inam, Lease, Coffee/Cardamum, Malki, Bane and so on and whether the tree growth is redeemed or unredeemed) and the right over the Land and Tree growth.	NA
07	Whether any tree proposed to be felled is reserved to Government, if so, details may be give.	NA
08	Whether unconditional consent of the other owners having share in the right to land and the trees if any is obtained (Proof thereof to be enclosed).	NA
09	Whether the license or certificate in respect of the following is enclosed in case the purpose of felling is for; (i)Coffee cultivation certificate from Coffee Board (ii)Rubber Cultivation - Certificate from Rubber Board. (iii)Cardamum Cultivation- Certificate from Cardamum Board. (iv)For construction of building Certificate from Village Panchayat or Executive Officers of the Municipality as the case may be.	NA

I/We therefore, request you to accord permission for clearance of trees infringing **Metro Station construction works and bus bay construction works** from Sy.No. mentioned above.

I/We am/are prepared to furnish other particulars if any require and demanded by the' tree Officer in this regard during the course of enquiry.

I/We agree to abide by the provision of the Karnataka Preservation of Trees Act, 1976 and the Karnataka Forest Act, 1963 and the Rules made thereunder and such other conditions that may be imposed by the Tree Officer.

I/We do hereby agree to indemnify Government of Karnataka against any loss or damage caused on account of permission accorded to me by the Tree Officer based on erroneous or wrong information furnished by me.

Yours Faithfully,


Deputy Chief Engineer
Reach 1A, BMRCL

NUMBER OF TREES STANDING IN THE PROJECT AREA (For Bus Hub near Benniganahalli Lake Bund and Jyothipura Metro Station Entry/Exit Structure)

SL. NO	New Tree No.	Tree Name	Girth of tree @ 1.37m height (m)	Full Height of Tree by Visual Inspection (m)	Easting (m)	Northing (m)	Latitude (N)	Longitude (E)	Remarks
01	01	Subabul Tree	0.42	4.00	789483.320	1438348.494	12° 59' 50.0967" N	77° 40' 6.9199" E	
02	02	Rain Tree	2.43	9.00	789484.289	1438352.009	12° 59' 50.2107" N	77° 40' 6.9533" E	
03	03	Rain Tree	1.05	9.00	789488.639	1438352.296	12° 59' 50.2185" N	77° 40' 7.0976" E	
04	04	Rain Tree	1.29	9.00	789489.130	1438350.186	12° 59' 50.1497" N	77° 40' 7.1132" E	
05	05	Rain Tree	1.61	9.00	789494.400	1438350.317	12° 59' 50.1522" N	77° 40' 7.2880" E	
06	6A	Rain Tree	1.17	10.00	789494.274	1438354.099	12° 59' 50.2752" N	77° 40' 7.2851" E	
	6B		1.39	10.00					
07	07	Rain Tree	1.19	9.00	789500.645	1438354.251	12° 59' 50.2780" N	77° 40' 7.4965" E	
08	08	Rain Tree	1.30	10.00	789506.475	1438352.487	12° 59' 50.2187" N	77° 40' 7.6892" E	
09	9A	Haale Tree	0.21	2.50	789501.871	1438345.245	12° 59' 49.9847" N	77° 40' 7.5340" E	
	9B		0.17	2.50					
10	10	Haale Tree	0.10	2.50	789497.188	1438344.544	12° 59' 49.9635" N	77° 40' 7.3784" E	
11	11	Ashoka	0.64	8.00	789523.836	1438325.145	12° 59' 49.3236" N	77° 40' 8.2554" E	
12	12	Phycus Alba	0.94	8.00	789520.993	1438323.790	12° 59' 49.2805" N	77° 40' 8.1606" E	
13	13	Neem Tree	0.51	4.00	789496.091	1438324.788	12° 59' 49.3215" N	77° 40' 7.3352" E	
14	14A	Peepal Tree	1.90	10.00	789494.408	1438324.231	12° 59' 49.3039" N	77° 40' 7.2792" E	
	14B		2.00	10.00					
	14C		1.80	10.00					
	14D		1.70	10.00					
	14E		1.60	10.00					
	14F		1.50	10.00					
15	15	Coconut	1.04	8.00	789486.241	1438311.412	12° 59' 48.8899" N	77° 40' 7.0039" E	
16	16	Banni Tree	0.92	6.00	789479.123	1438313.351	12° 59' 48.9553" N	77° 40' 6.7685" E	
17	17	Palm Tree	0.62	7.00	789148.739	1438165.134	12° 59' 44.2481" N	77° 39' 55.7612" E	
18	18	Rain Tree	1.33	8.00	789125.532	1438173.844	12° 59' 44.5393" N	77° 39' 54.9946" E	
19	19	Palm Tree	1.75	3.50	789150.588	1438151.156	12° 59' 43.7930" N	77° 39' 55.8177" E	
20	20	Hatthi Tree	0.90	5.00	789155.59	1438149.663	12° 59' 43.7427" N	77° 39' 55.9830" E	
21	21	Tecoma	0.85	5.00	789185.396	1438148.615	12° 59' 43.6985" N	77° 39' 56.9710" E	
22	22	Tecoma	0.67	4.00	789188.895	1438149.763	12° 59' 43.7346" N	77° 39' 57.0875" E	
23	23	Tecoma	0.80	3.50	789194.292	1438152.06	12° 59' 43.8075" N	77° 39' 57.2672" E	
24	24	Hole dasavala Tree	0.60	2.50	789098.273	1438151.812	12° 59' 43.8321" N	77° 39' 54.0831" E	
25	25	Karijaali	1.02	5.00	789090.609	1438146.74	12° 59' 43.6698" N	77° 39' 53.8272" E	
26	26	Peepal Tree	1.30	8.00	789084.191	1438143.733	12° 59' 43.5742" N	77° 39' 53.6133" E	
27	27	Rain Tree	1.15	7.00	789072.257	1438138.876	12° 59' 43.4203" N	77° 39' 53.2159" E	Can Be Retained
28	28	Tecoma	0.81	7.00	789083.05	1438130.095	12° 59' 43.1311" N	77° 39' 53.5707" E	
29	29	Tecoma	0.48	5.00	789080.064	1438127.852	12° 59' 43.0592" N	77° 39' 53.4709" E	
30	30	Tecoma	0.60	3.50	789077.587	1438125.97	12° 59' 42.9988" N	77° 39' 53.3881" E	
31	31	Hole dasavala	0.58	3.50	789073.308	1438123.624	12° 59' 42.9240" N	77° 39' 53.2454" E	Can Be Retained
32	32	Tecoma	0.58	3.50	789088.847	1438135.051	12° 59' 43.2903" N	77° 39' 53.7647" E	
33	33	Tecoma	0.74	5.00	789091.187	1438137.766	12° 59' 43.3778" N	77° 39' 53.8432" E	
34	34A	Honge Tree	0.70	4.00	789093.187	1438129.578	12° 59' 43.1108" N	77° 39' 53.9067" E	
	34B		0.80	5.00					
35	35A	Honge Tree	0.78	5.00	789090.483	1438126.837	12° 59' 43.0226" N	77° 39' 53.8161" E	
	35B		0.48	5.00					
36	36	Teakwood Tree	0.55	5.00	789088.223	1438125.632	12° 59' 42.9842" N	77° 39' 53.7407" E	
37	37	Nerale Tree	0.68	6.00	789083.805	1438116.69	12° 59' 42.6949" N	77° 39' 53.5911" E	
38	38	Ashoka	0.96	8.00	789082.852	1438118.251	12° 59' 42.7460" N	77° 39' 53.5600" E	
39	39	Bilwathre Tree	0.79	5.00	789086.633	1438108.073	12° 59' 42.4137" N	77° 39' 53.6819" E	
40	40	Banni Tree	0.98	8.00	789081.629	1438107.648	12° 59' 42.4016" N	77° 39' 53.5158" E	
41	41	Mango Tree	0.45	3.00	789079.263	1438110.72	12° 59' 42.5023" N	77° 39' 53.4384" E	
42	42	Tecoma	0.61	3.00	789071.838	1438120.432	12° 59' 42.8207" N	77° 39' 53.1956" E	
43	43	Rain Tree	1.91	9.00	789066.105	1438119.856	12° 59' 42.8039" N	77° 39' 53.0053" E	Can Be Retained
44	44	Tecoma	0.56	4.50	789065.072	1438115.7	12° 59' 42.6691" N	77° 39' 52.9696" E	Can Be Retained
45	45A	Tecoma	0.62	4.50					Can Be Retained
	45B		0.52	4.50	789056.549	1438093.71	12° 59' 41.9569" N	77° 39' 52.6793" E	Can Be Retained
46	46A	Banyan Tree	5.30	8.00	789069.315	1438102.065	12° 59' 42.2243" N	77° 39' 53.1055" E	
47	47A	Peepal Tree	0.62	11.00	789114.596	1438118.713	12° 59' 42.7502" N	77° 39' 54.6129" E	
	47B		0.71						
	47C		0.41						

Total number of trees standing in the Project Area = 47 Trees

Total Number of Tree Proposed for Removal = 42


Col. Atul Kulshreshtha, Retd.
 Dy Chief Engineer, CE
 Bangalore Metro Rail Corporation Limited
 (BMRC).

NUMBER OF TREES PROPOSED FOR REMOVAL (For Bus Hub near Benniganahalli Lake Bund and Jyothipura Metro Station Entry/Exit Structure)

SL. NO	New Tree No.	Tree Name	Girth of tree @ 1.37m height (m)	Full Height of Tree by Visual Inspection (m)	Easting (m)	Northing (m)	Latitude (N)	Longitude (E)	Remarks
01	01	Subabul Tree	0.42	4.00	789483.320	1438348.494	12° 59' 50.0967" N	77° 40' 6.9199" E	
02	02	Rain Tree	2.43	9.00	789484.289	1438352.009	12° 59' 50.2107" N	77° 40' 6.9533" E	
03	03	Rain Tree	1.05	9.00	789488.639	1438352.296	12° 59' 50.2185" N	77° 40' 7.0976" E	
04	04	Rain Tree	1.29	9.00	789489.130	1438350.186	12° 59' 50.1497" N	77° 40' 7.1132" E	
05	05	Rain Tree	1.61	9.00	789494.400	1438350.317	12° 59' 50.1522" N	77° 40' 7.2880" E	
06	6A	Rain Tree	1.17	10.00	789494.274	1438354.099	12° 59' 50.2752" N	77° 40' 7.2851" E	
	6B		1.39	10.00					
07	07	Rain Tree	1.19	9.00	789500.645	1438354.251	12° 59' 50.2780" N	77° 40' 7.4965" E	
08	08	Rain Tree	1.30	10.00	789506.475	1438352.487	12° 59' 50.2187" N	77° 40' 7.6892" E	
09	9A	Haale Tree	0.21	2.50	789501.871	1438345.245	12° 59' 49.9847" N	77° 40' 7.5340" E	
	9B		0.17	2.50					
10	10	Haale Tree	0.10	2.50	789497.188	1438344.544	12° 59' 49.9635" N	77° 40' 7.3784" E	
11	11	Ashoka	0.64	8.00	789523.836	1438325.145	12° 59' 49.3236" N	77° 40' 8.2554" E	
12	12	Phycus Alba	0.94	8.00	789520.993	1438323.790	12° 59' 49.2805" N	77° 40' 8.1606" E	
13	13	Neem Tree	0.51	4.00	789496.091	1438324.788	12° 59' 49.3215" N	77° 40' 7.3352" E	
14	14A	Peepal Tree	1.90	10.00	789494.408	1438324.231	12° 59' 49.3039" N	77° 40' 7.2792" E	
	14B		2.00	10.00					
	14C		1.80	10.00					
	14D		1.70	10.00					
	14E		1.60	10.00					
	14F		1.50	10.00					
15	15	Coconut	1.04	8.00	789486.241	1438311.412	12° 59' 48.8899" N	77° 40' 7.0039" E	
16	16	Banni Tree	0.92	6.00	789479.123	1438313.351	12° 59' 48.9553" N	77° 40' 6.7685" E	
17	17	Palm Tree	0.62	7.00	789148.739	1438165.134	12° 59' 44.2481" N	77° 39' 55.7612" E	
18	18	Rain Tree	1.33	8.00	789125.532	1438173.844	12° 59' 44.5393" N	77° 39' 54.9946" E	
19	19	Palm Tree	1.75	3.50	789150.588	1438151.156	12° 59' 43.7930" N	77° 39' 55.8177" E	
20	20	Hatthi Tree	0.90	5.00	789155.59	1438149.663	12° 59' 43.7427" N	77° 39' 55.9830" E	
21	21	Tecoma	0.85	5.00	789185.396	1438148.615	12° 59' 43.6985" N	77° 39' 56.9710" E	
22	22	Tecoma	0.67	4.00	789188.895	1438149.763	12° 59' 43.7346" N	77° 39' 57.0875" E	
23	23	Tecoma	0.80	3.50	789194.292	1438152.06	12° 59' 43.8075" N	77° 39' 57.2672" E	
24	24	Hole dasavala Tree	0.60	2.50	789098.273	1438151.812	12° 59' 43.8321" N	77° 39' 54.0831" E	
25	25	Karijaali	1.02	5.00	789090.609	1438146.74	12° 59' 43.6698" N	77° 39' 53.8272" E	
26	26	Peepal Tree	1.30	8.00	789084.191	1438143.733	12° 59' 43.5742" N	77° 39' 53.6133" E	
27	28	Tecoma	0.81	7.00	789083.05	1438130.095	12° 59' 43.1311" N	77° 39' 53.5707" E	
28	29	Tecoma	0.48	5.00	789080.064	1438127.852	12° 59' 43.0592" N	77° 39' 53.4709" E	
29	30	Tecoma	0.60	3.50	789077.587	1438125.97	12° 59' 42.9988" N	77° 39' 53.3881" E	
30	31	Hole dasavala	0.58	3.50	789073.308	1438123.624	12° 59' 42.9240" N	77° 39' 53.2454" E	
31	33	Tecoma	0.74	5.00	789091.187	1438137.766	12° 59' 43.3778" N	77° 39' 53.8432" E	
32	34A	Honge Tree	0.70	4.00	789093.187	1438129.578	12° 59' 43.1108" N	77° 39' 53.9067" E	
	34B		0.80	5.00					
33	35A	Honge Tree	0.78	5.00	789090.483	1438126.837	12° 59' 43.0226" N	77° 39' 53.8161" E	
	35B		0.48	5.00					
34	36	Teakwood Tree	0.55	5.00	789088.223	1438125.632	12° 59' 42.9842" N	77° 39' 53.7407" E	
35	37	Nerale Tree	0.68	6.00	789083.805	1438116.69	12° 59' 42.6949" N	77° 39' 53.5911" E	
36	38	Ashoka	0.96	8.00	789082.852	1438118.251	12° 59' 42.7460" N	77° 39' 53.5600" E	
37	39	Bilwathre Tree	0.79	5.00	789086.633	1438108.073	12° 59' 42.4137" N	77° 39' 53.6819" E	
38	40	Banni Tree	0.98	8.00	789081.629	1438107.648	12° 59' 42.4016" N	77° 39' 53.5158" E	
39	41	Mango Tree	0.45	3.00	789079.263	1438110.72	12° 59' 42.5023" N	77° 39' 53.4384" E	
40	42	Tecoma	0.61	3.00	789071.838	1438120.432	12° 59' 42.8207" N	77° 39' 53.1956" E	
41	46A	Banyan Tree	5.30	8.00	789069.315	1438102.065	12° 59' 42.2243" N	77° 39' 53.1055" E	
42	47A	Peepal Tree	0.62	11.00	789114.596	1438118.713	12° 59' 42.7502" N	77° 39' 54.6129" E	
	47B		0.71						
	47C		0.41						

Total Number of Tree Proposed for Removal = 42

Col. Atul Kuishredtha, Retd.

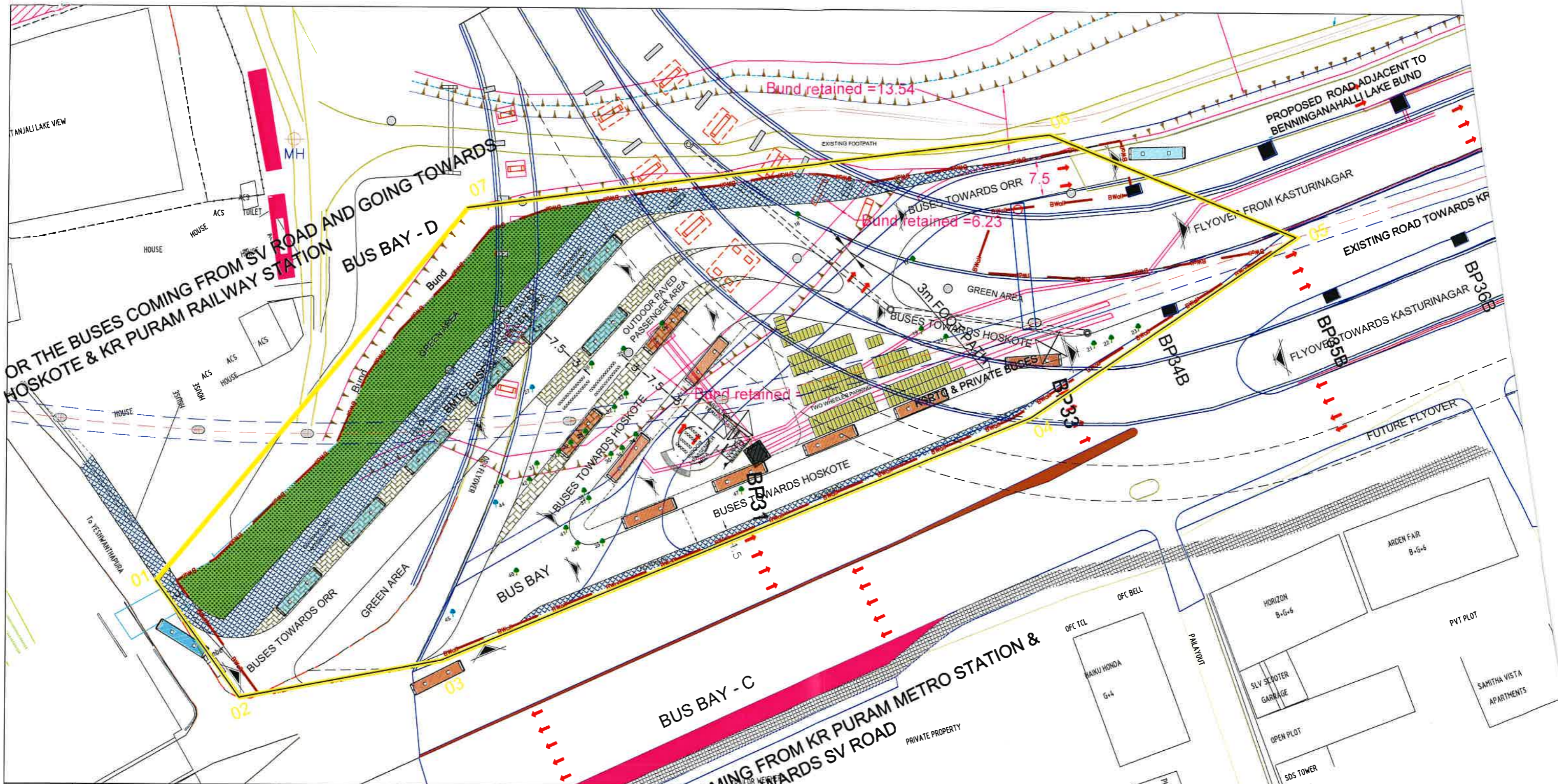
By Chief Engineer
Bangalore Metro Rail Corporation Limited
(BMRC). D.Y. LE

BOUNDARY COORDINATES OF BUS HUB AND JYOTHIPURAM ENTRY EXIT STRUCTURE

SL. No	Eastings (m)	Northing (m)	Latitude (N)	Longitude (E)	Remarks
1	788996.539	1438100.693	12° 59' 42.2052"	77° 39' 50.692" E	Boundary co ordinates of Busbay Area
2	789013.526	1438077.341	12° 59' 41.4384"	77° 39' 51.246" E	
3	789054.308	1438084.924	12° 59' 41.6724"	77° 39' 52.603" E	
4	789172.953	1438134.470	12° 59' 43.242"	77° 39' 56.552" E	
5	789225.834	1438170.840	12° 59' 44.4084"	77° 39' 58.32" E	
6	789176.031	1438190.836	12° 59' 45.0744"	77° 39' 56.675" E	
7	789058.962	1438175.550	12° 59' 44.6172"	77° 39' 52.787" E	
8	789476.947	1438306.064	12° 59' 48.7176"	77° 40' 6.694" E	
9	789479.983	1438354.268	12° 59' 50.2872"	77° 40' 6.812" E	
10	789515.976	1438360.462	12° 59' 50.4744"	77° 40' 8.008" E	
11	789527.427	1438323.732	12° 59' 49.2756"	77° 40' 08.375" E	
12	789490.144	1438308.989	12° 59' 48.8112"	77° 40' 7.133" E	

[Signature]
Dy CE

Col. Atul Kulsreshtha, Retd.
Dy Chief Engineer
Bangalore Metro Rail Corporation Limited
(BMRC).



SL. No	Easting (m)	Northing (m)	Latitude (N)	Longitude (E)	Remarks
1	788996.539	1438100.693	12 ° 59' 42.2052"	77° 39' 50.692" E	Boundary co ordinates of Busbay Area
2	789013.526	1438077.341	12 ° 59' 41.4384"	77° 39' 51.246" E	
3	789054.308	1438084.924	12 ° 59' 41.6724"	77° 39' 52.603" E	
4	789172.953	1438134.470	12 ° 59' 43.242"	77° 39' 56.552" E	
5	789225.834	1438170.840	12 ° 59' 44.4084"	77° 39' 58.32" E	
6	789176.031	1438190.836	12 ° 59' 45.0744"	77° 39' 56.675" E	
7	789058.962	1438175.550	12 ° 59' 44.6172"	77° 39' 52.787" E	

ASSOCIATED HYDRO PRESSING PVT.LTD

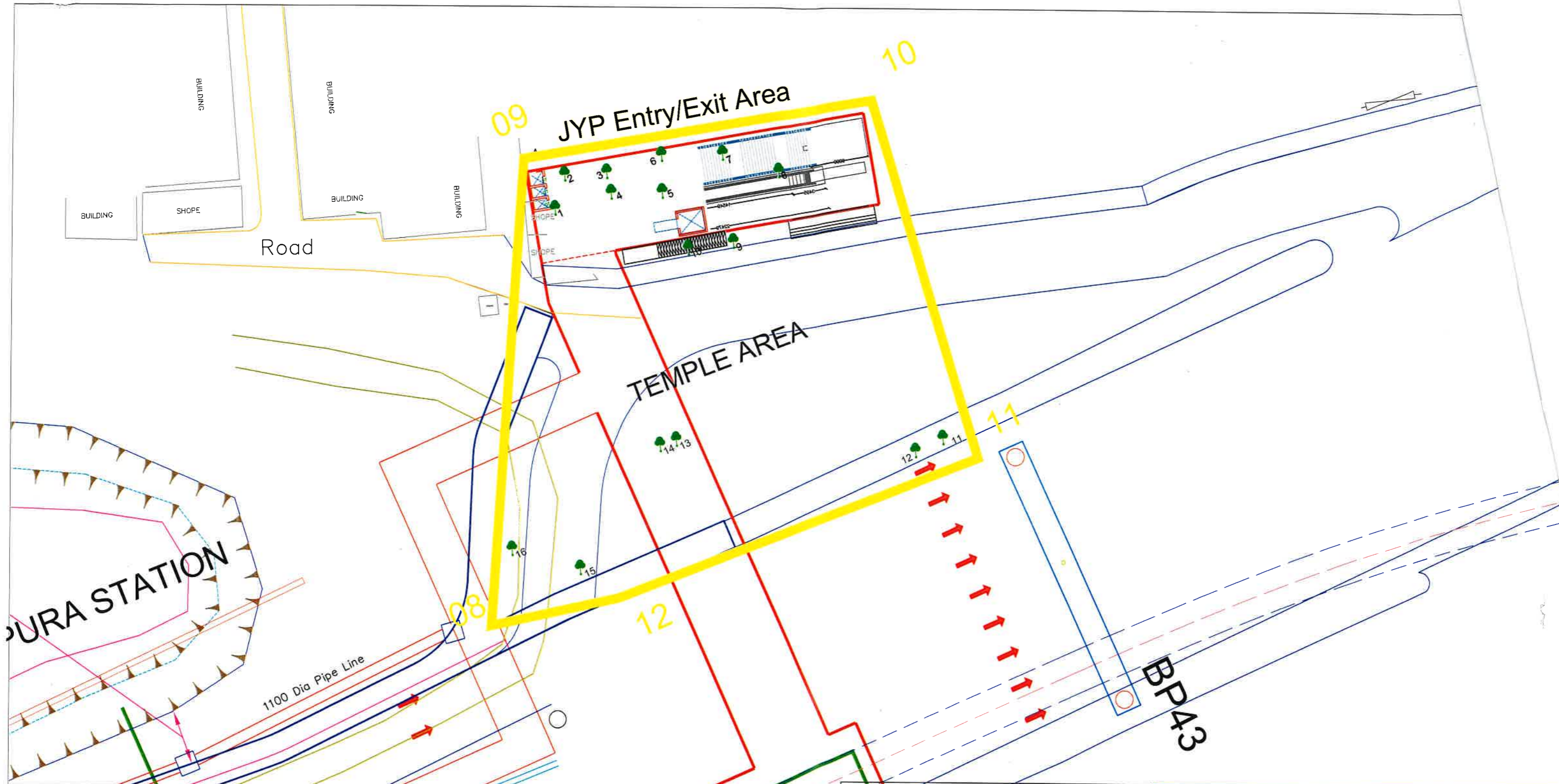
Atul Kulkarni, Retd.
 Dy Chief Engineer
 Bangalore Metro Rail Corporation Limited (BMRL)

LEGEND	
RETAINED TREE	
REMOVAL TREE	
BOUNDARY AREA	

BANGALORE METRO RAIL CORPORATION LTD.
 SECTION: R1 Extn:
 (BAIYAPPANAHALLI TO WHITEFIELD)
 LAND PLANS.

PREPARED BY : BMRL VERIFIED BY : BMRL APPROVED BY : BMRL

DRG. No. **BMRL / PH-II / R-1 Extn / Tree** SHEET No. 1/R0



SL. No	Easting (m)	Northing (m)	Latitude (N)	Longitude (E)	Remarks
8	789476.947	1438306.064	12 ° 59' 48.7176"	77° 40' 6.694" E	Boundary co ordinates of JYP entry/exit & Temple Area
9	789479.983	1438354.268	12 ° 59' 50.2872"	77° 40' 6.812" E	
10	789515.976	1438360.462	12 ° 59' 50.4744"	77° 40' 8.008" E	
11	789527.427	1438323.732	12 ° 59' 49.2756"	77° 40' 08.375" E	
12	789490.144	1438308.989	12 ° 59' 48.8112"	77° 40' 7.133" E	

LEGEND

- RETAINED TREE
- REMOVAL TREE
- BOUNDARY AREA

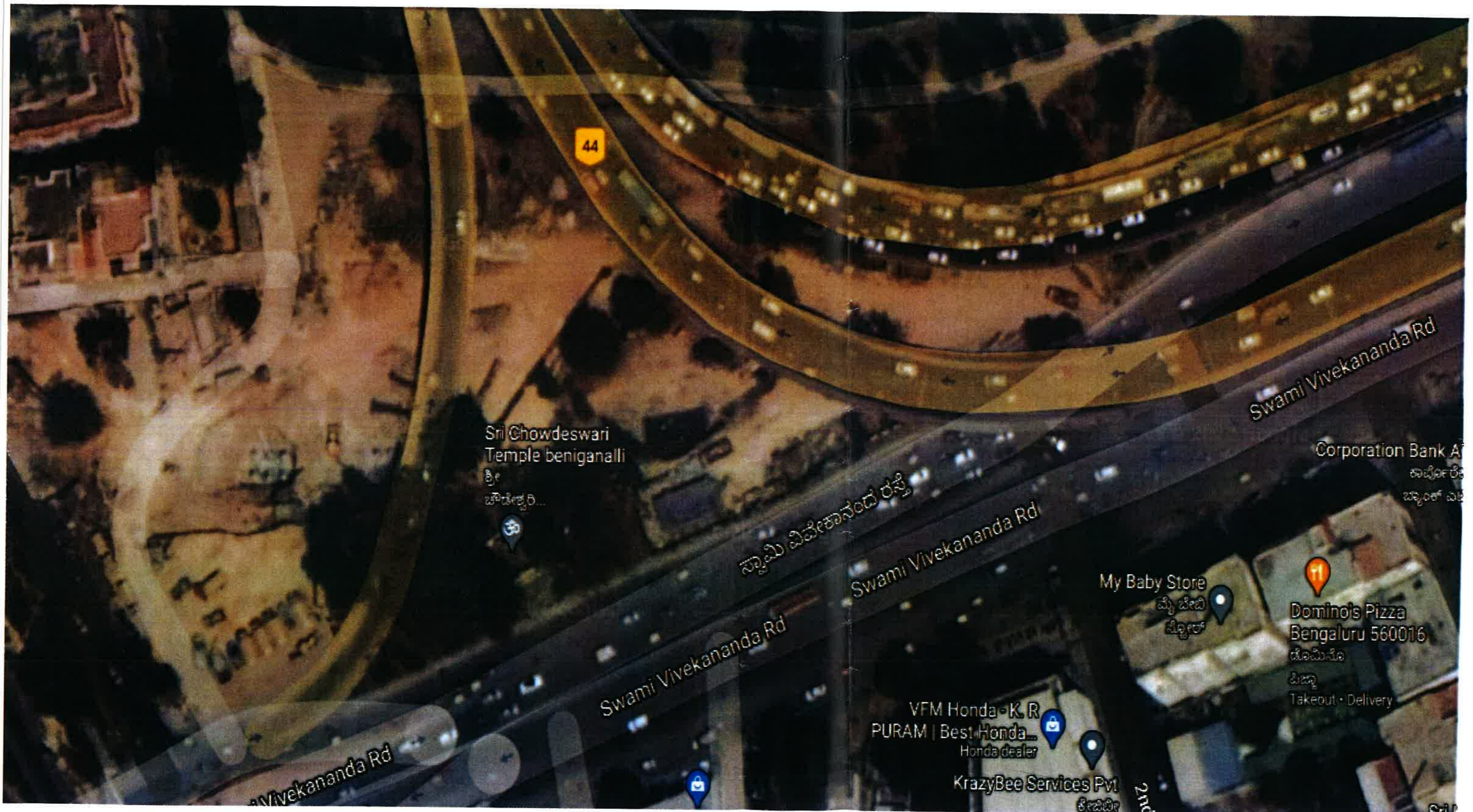
BANGALORE METRO RAIL CORPORATION LTD.

SECTION: R1 Extn:
(BAIYAPPANAHALLI TO WHITEFIELD)
LAND PLANS.

PREPARED BY: BMRCL VERIFIED BY: BMRCL APPROVED BY: BMRCL

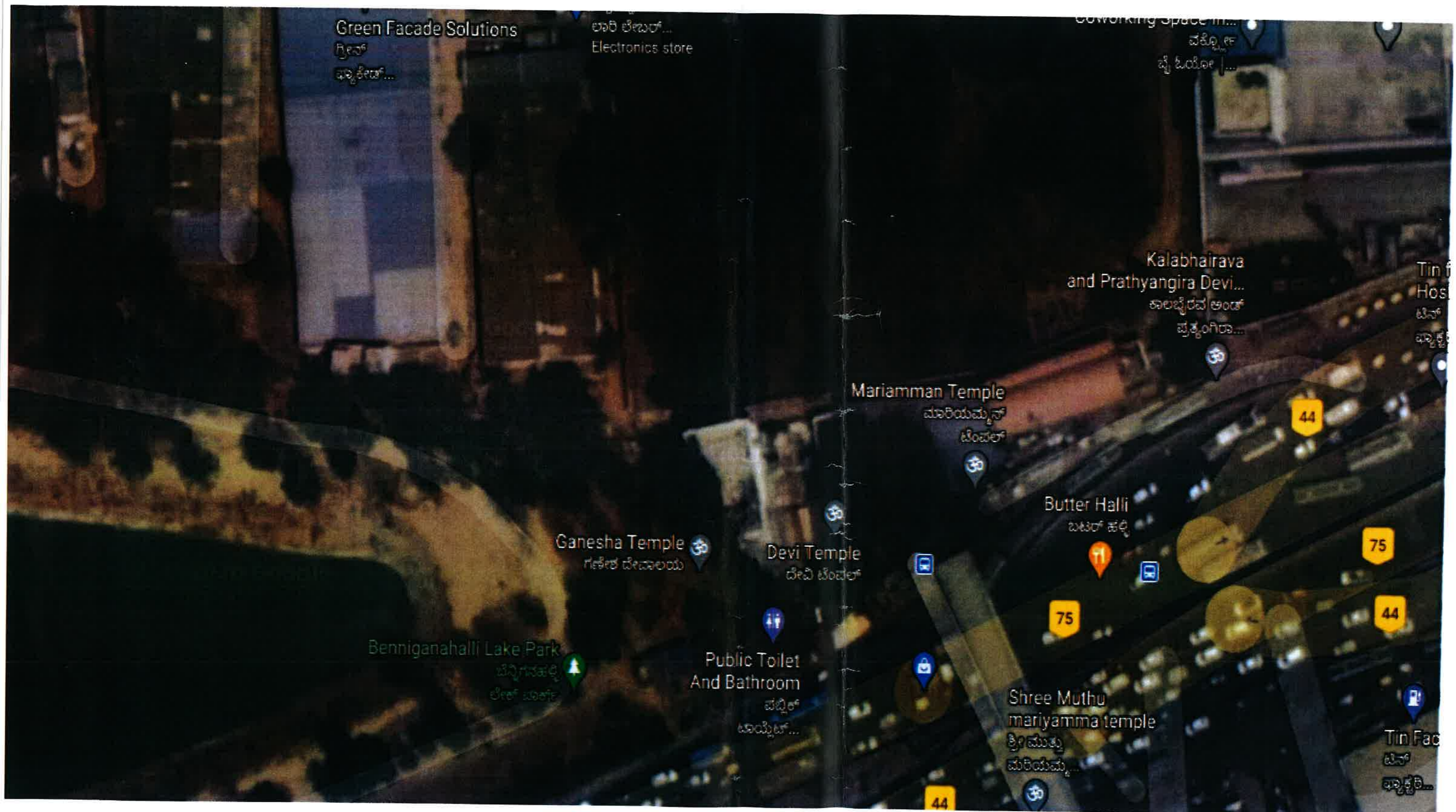
DRG. No: BMRCL / PH-II / R-1 Extn / Tree SHEET No. 1/R0

Col. Atul Kulkarni, Retd.
Dy Chief Engineer
Bangalore Metro Rail Corporation Limited
(BMRCL).



Col. Atul Kishrestha, Retd.
Dy Chief Engineer
Bengaluru Metro Rail Corporation Limited
(BMRCL).

AS
ABE



Col. Atul Kulkarni, Retd.
 Dy Chief Engineer
 Bangalore Metro Rail Corporation Limited
 (BMRCL).

